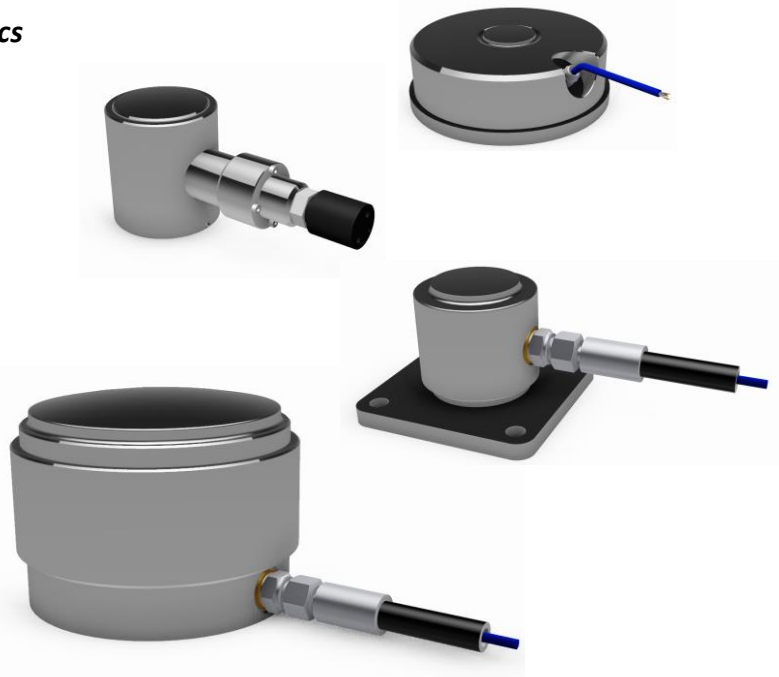
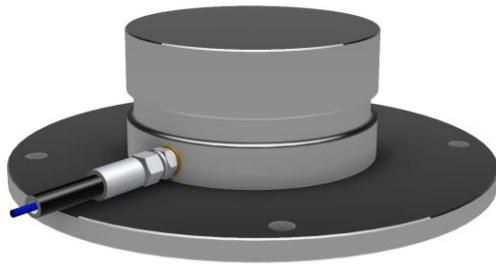


OEM Compression Load Cell LS-3410-CL Series

Robust designs manufactured specifically for use in harsh and challenging environments offshore, such as platforms, ships, rigs and drilling applications.

- Redundant signal with dual electronics*
- Range up to 1200 metric tons*
- Submersible upon request*
- Ex ia IIC T5 and IEC Ex approved*
- Stainless Steel*



The LS-3410-CL is a well proven 4-20mA output compression load cell with fast response time, high accuracy and long life time performance in harsh and hazardous environments.

Huge flexibility in design and a long record of field proven solutions has made these sensors popular among customers in the gas and oil industry.

The sensor is digitally calibrated with an analogue 4-20mA output signal in a two conductor configuration.

The electronics are molded and encapsulated inside the sensor, proven to be the best solution for EMC, potential leakage and long lifetime performance.

Typical Applications are:

- Offshore Drilling*
- Offshore Production*
- Weighing systems*
- Winches*

Technical information

Full scale load	0 – 1T... 1200T
Maximum load at 20°C (Test Load)	0T – 25T Full scale range x 2 25T – 180T Full scale range x 2 to x 1.33 180T – 1200T Full scale range x 1.33
Temperature Range	-20°C to 80°C
Linearity	± 0.2% of full scale
Total accuracy at ambient temperature:	± 0.5% of full scale 0 - 1T ... 300T ± 1 % of full scale 0 - 300T ... 1200T
TCS (Thermal Compensated Sensitivity)	Typical 0.03% full scale x (temp. - amb)
Output Current	4-20mA, Current Loop
Supply Voltage	12-28 VDC
Electrical connection	2 wire
Response time	Less than 13ms
Power supply regulation	Yes
Voltage Spike Protection	Yes
Polarity protection	Yes
Insulation test	50 V DC (RMS) > 1GΩ
Sealing	IP68 / Submersible upon request
Material	Stainless steel
Intrinsic Safe Code	Ex ia IIC T4 Ga -45°C <Tamb<Ta: 80°C Ex ia IIIC T102°C Da

Note: Due to continuous product improvements, published specifications may change without notice.

Electrical connections

Cable:

- ✦ Hydraulic hose protected cable for tough environments
- ✦ Cable BFOU(i)
- ✦ Cable ÖLFLEX
- ✦ Cable MOR Polyrad
- ✦ Cable Subsea

Connector

- ✦ Gisma (titanium)
- ✦ Souriau (brass)
- ✦ Souriau (nickel-chrome coated brass)
- ✦ Glenair (stainless steel)

Scan-Sense AS is a Norwegian company specializing in design and manufacturing of high quality sensor solutions for pressure, load and force. The company has more than 28 years of experience of making tailor-made solutions for the oil and gas industry.

www.scansense.no

Manufactured by: **Scan-Sense AS**, Bekkeveien 163, 3173 Vear, NORWAY
Phone: +47 33 36 30 00, Fax: +47 33 36 30 01, E-mail: post@scansense.no